

MATERIAL SPECIFICATIONS

RECOMMENDED
 BASE METAL - CDA-210, GILDING, EXTRA SPRING TEMPER.
 PLATING - 0.0025/0.0075 MM THICK TIN.

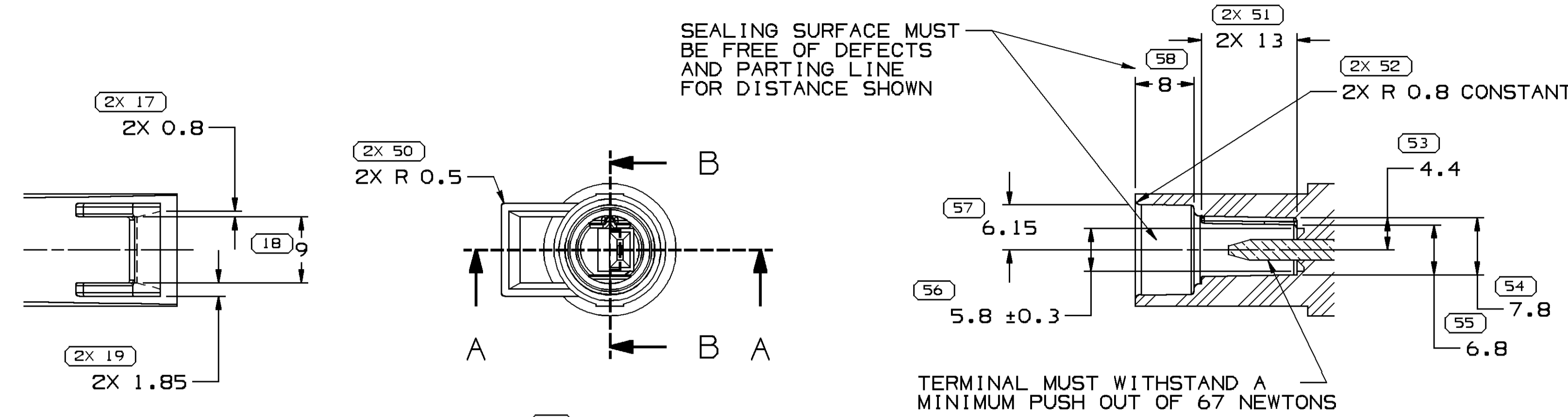
MINIMUMS
 ELECTRICAL CONDUCTIVITY - ≥ 20% IACS ± 20°C
 TENSILE STRENGTH - 407 MPa
 PLATING - FOR LOW ENERGY (≤ 5 V.) & NON-PASSENGER COMPARTMENT POWER CIRCUITS 0.0025/0.0075 MM THICK TIN. FOR MATERIALS CONTAINING 10% OR MORE ZINC, AN UNDERPLATE OF COPPER 0.0025/0.0075 MM THICK IS REQUIRED.

MATING BLADE INFORMATION

SCALE 5:1
 INSPECTION SYMBOLS SHOWN ON THESE VIEWS ARE FOR REFERENCE ONLY

| SYMBOL DEFINITION | | TOTAL NO OF INSPECTIONS REQUIRED | MISSING SYMBOLS |
|--|---------------|----------------------------------|-----------------|
| A DIMENSION WITHOUT AN INSPECTION REPORT SYMBOL DOES NOT REQUIRE INSPECTION. IT MAY BE CONTROLLED ON THE INDIVIDUAL COMPONENT DRAWING. | | 73 | 5 |
| | LAST NO. USED | 58 | |

| DWG STATUS | DATE | STG | REV | N/P | CHG | ZONE | REVISION HISTORY | AUTH | DR | APVD | APV2 |
|------------|------|-----|-----|-----|-----|------|---|--------|-----|------|------|
| 05N003 | R | 01 | - | - | - | - | ALL PARTS - CLEARED REV COLUMN AND REDRAWN TO PD: 15481001 - RELEASED | 248063 | JAA | JAA | RMF |
| 11MR09 | R | 02 | - | - | - | - | ALL PARTS - REMOVED INSPECTION SYMBOL #5 AND REVISED LABEL | 407541 | PAC | GLB | RHG |
| 14SE10 | R | 03 | - | - | - | - | 13843893 - RELEASED AND ADDED ADHESIVE NOTE | 411835 | FRE | FRE | FRE |
| 07AU12 | R | 04 | - | - | - | - | ADDED RECYCLING CODE AND LOGO NOTES | 419179 | AMB | EDA | FOO |



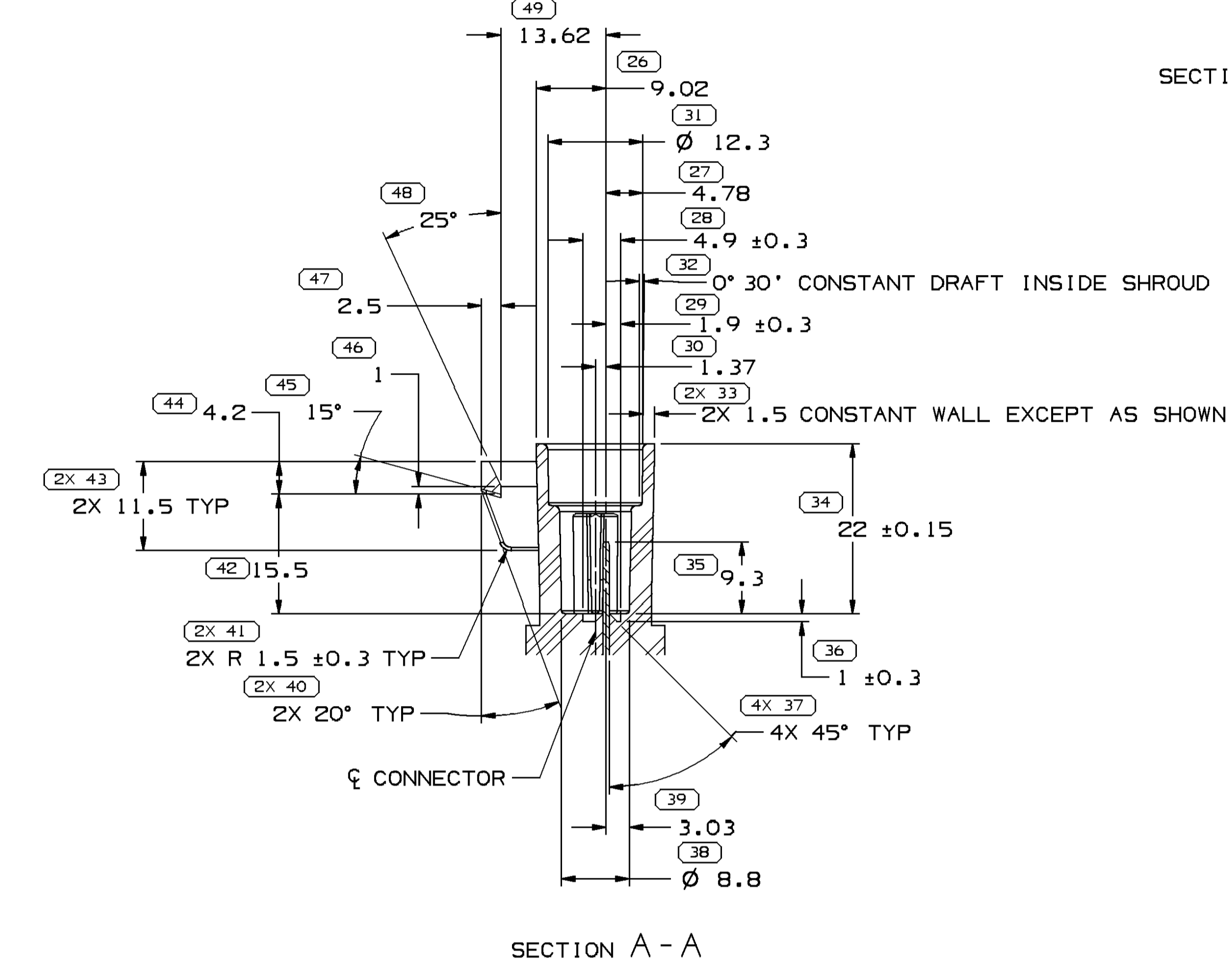
SECTION B-B

- NOTES**
- UNLESS OTHERWISE SPECIFIED AND/OR INDICATED:
 DIMENSIONS ARE TO FACE OF VIEW SHOWN AND AUTOMATICALLY ROUNDED BY COMPUTER FOR INSPECTION (SEE MATH MODEL FOR PRECISE DIMENSIONS). FOR ALL OTHER DIMENSIONS NOT SHOWN BUT REQUIRED FOR TOOL BUILD, SEE MATH MODEL FOR PRECISE TOOL PATH DATA. ALL RADII 0.4 DRAFT IS 1° MAX ON ALL OUTSIDE SURFACES.
 - WHEN USING THIS INFORMATION FOR A NEW DESIGN, REQUEST THE LATEST COPY OF THIS PRINT FROM DELPHI PACKARD ELECTRIC DIVISION

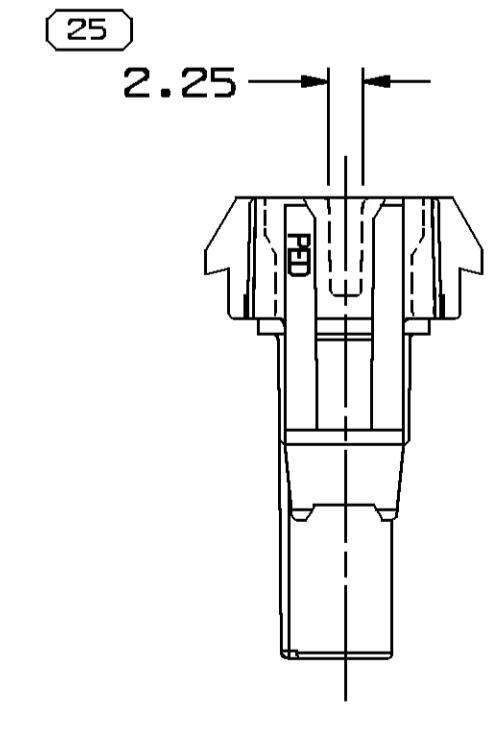
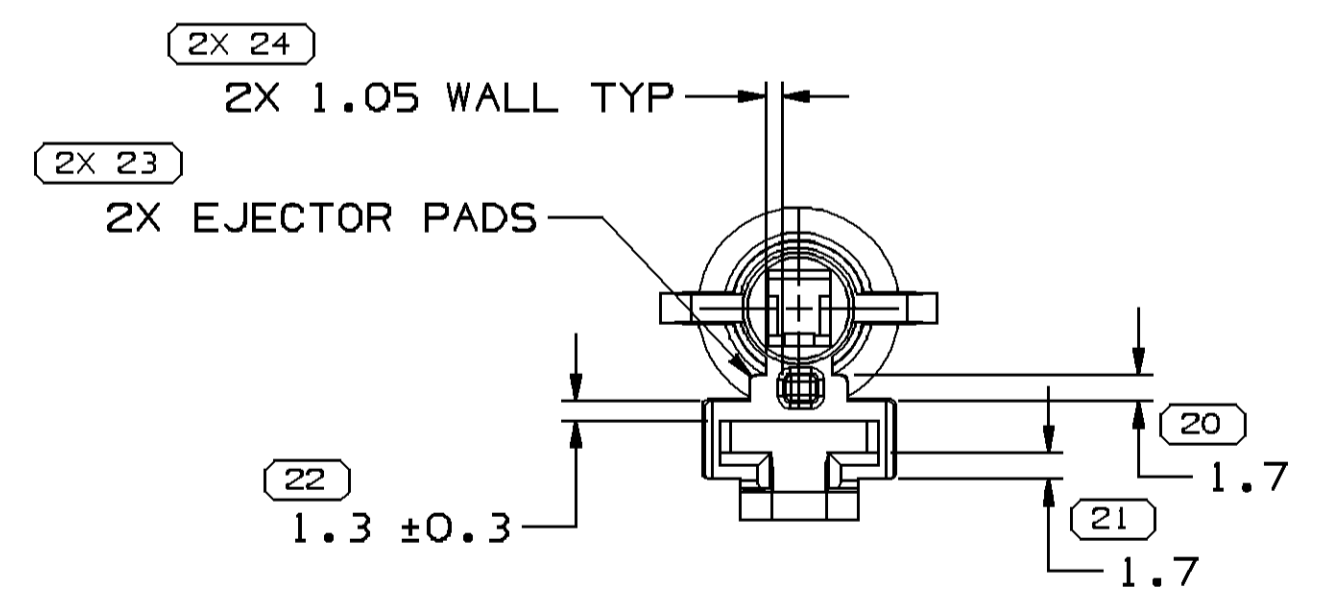
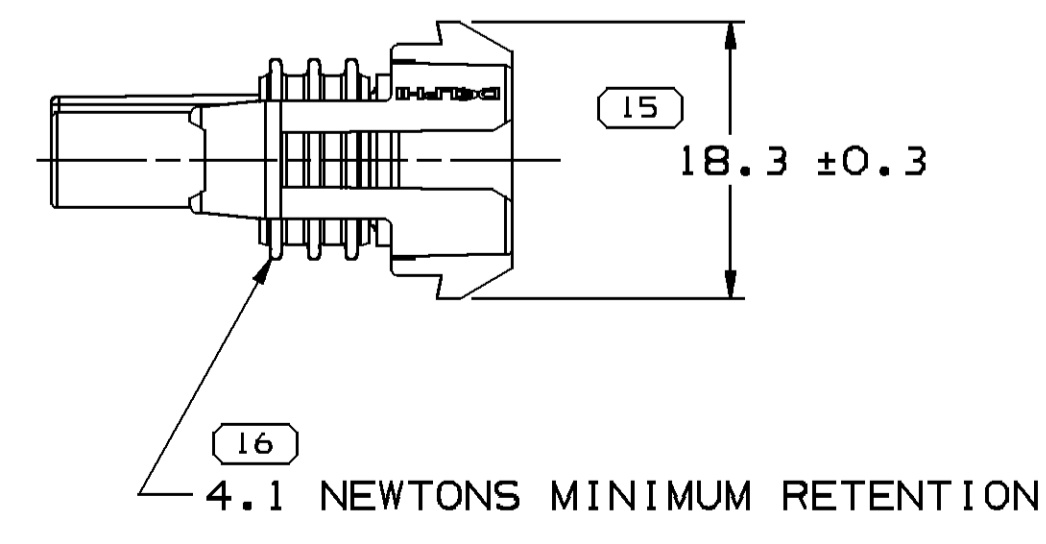
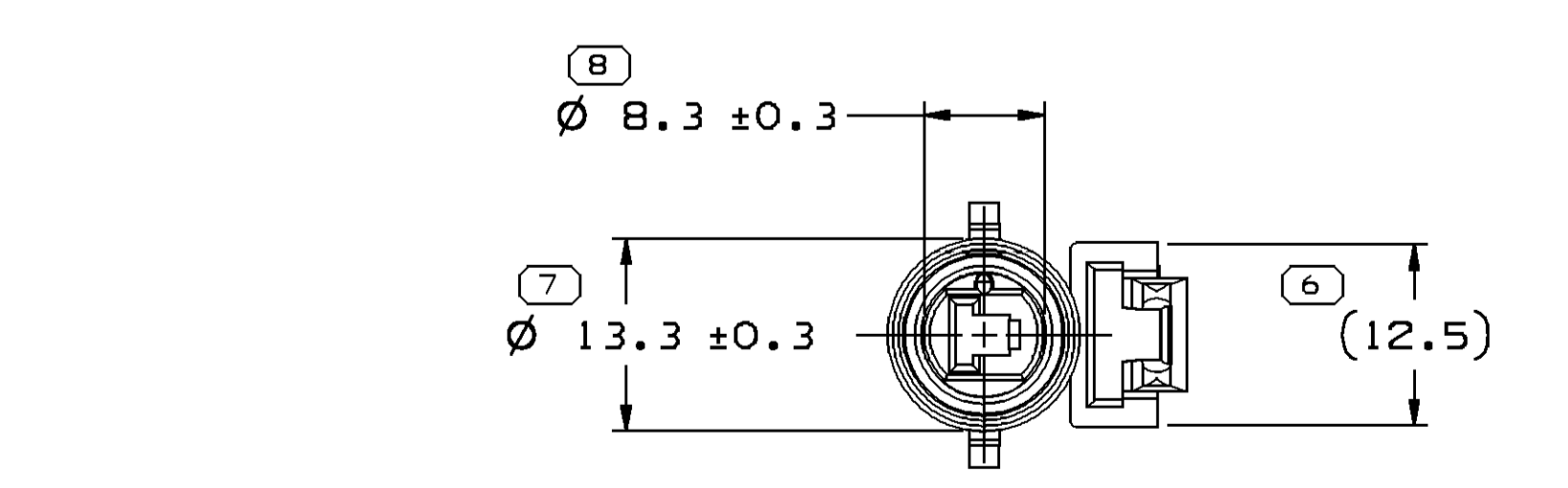
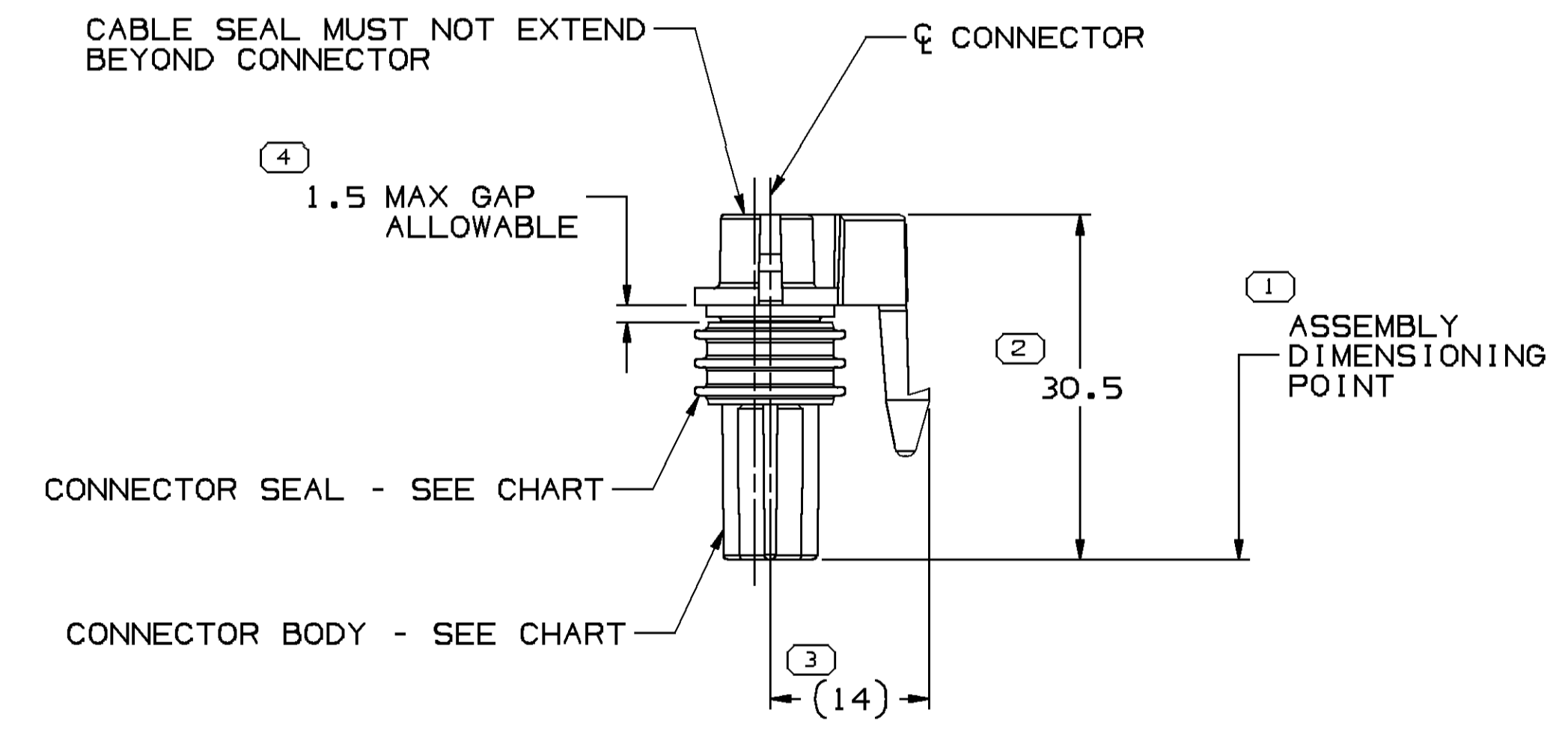
RECOMMENDED MATERIAL
 GLASS REINFORCED NYLON OR POLYESTER

MATING CONNECTOR INFORMATION

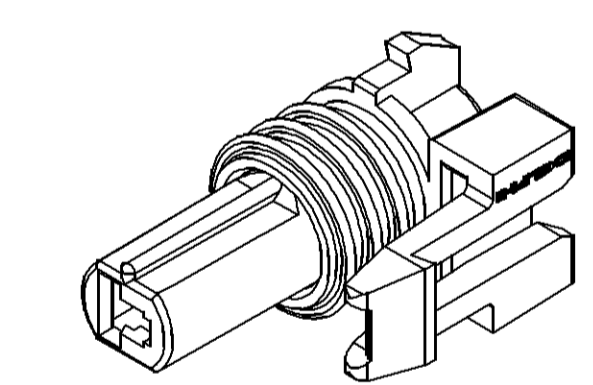
SCALE 5:1
 INSPECTION SYMBOLS SHOWN ON THESE VIEWS ARE FOR REFERENCE ONLY



SECTION A-A



OPTIONAL CONNECTOR CONSTRUCTION



- NOTES**
- UNLESS OTHERWISE SPECIFIED AND/OR INDICATED:
 DIMENSIONS ARE TO FACE OF VIEW SHOWN AND AUTOMATICALLY ROUNDED BY COMPUTER FOR INSPECTION (SEE MATH MODEL FOR PRECISE DIMENSIONS). FOR ALL OTHER DIMENSIONS NOT SHOWN BUT REQUIRED FOR TOOL BUILD, SEE MATH MODEL FOR PRECISE TOOL PATH DATA.
 - WHEN PARTS ARE SHIPPED THEY MUST BE PACKED IN PLASTIC BAGS OR SHIPPING CONTAINERS MUST BE LINED WITH PLASTIC LINERS. BAGS OR LINERS MUST BE SEALED TO AVOID FOREIGN MATTER.
 - SEALING CODE 3 - DESIGN WILL PASS SALT FOG AND IMMERSION TEST AFTER CONDITIONING AS SPECIFIED IN ESA-644 (WEATHER-PACK), ESA-710 (METRI-PACK), ESA-650 (UNDERHOOD MICRO-PACK), C-4006 (WORLD CONNECTOR), ETC WHEN MATED TO MATING PART OR EQUIVALENT
 - THIS PRODUCT IS NOT CATEGORIZED AS AN APPEARANCE ITEM, MINOR IMPERFECTIONS INCLUDING, BUT NOT LIMITED TO, FLOW MARKS, COLOR BLEMISHES, GATE VESTIGE, AND SOFT FLASH THAT DO NOT AFFECT THE FIT, FORM, OR FUNCTION OF THE PART ARE PERMISSIBLE PER DPNP-4.7-CS-01.
 - FOR APPLICATION DATA SEE THE INDIVIDUAL APPLICATION DRAWINGS.
 - FOR PART NUMBER WITH ADHESIVE, USE M3510001 OR ADHESIVE APPROVED BY MATERIALS ENGINEERING TO GLUE CONNECTOR SEAL TO CONNECTOR.
 - MATERIAL RECYCLING CODE PER ISO 11469. (2,3)X(0,1) CHARACTERS AS SHOWN TO BE LOCATED ON ANY EXTERIOR SURFACE. OPTIONAL CONSTRUCTION TO BE NO MATERIAL RECYCLING CODE.
 - (2,3)X(0,1) DELPHI CORPORATE BRAND TO BE LOCATED ON ANY EXTERIOR SURFACE, PREFERABLY VISIBLE AT FINAL ASSEMBLY. OPTIONAL CONSTRUCTION FOR EXISTING TOOLING MAY BE "PED" OR NO LOGO.

| PART NO WITH ADHESIVE | REV | N/P | PART NO WITHOUT ADHESIVE | REV | N/P | CONNECTOR P/N | CONNECTOR SEAL |
|-----------------------|-----|-----|--------------------------|-----|-----|---------------|----------------|
| 13843893 | 01 | AA | 15481001 | 01 | AB | 15483473 | 12065247 |
| - | - | - | 12089916 | A2 | - | 12089912 | 12065247 |
| - | - | - | 12065172 | A2 | - | 12065170 | 12065247 |

| DIMENSIONAL RANGE (MM) | CHART SET | THIRD ANGLE PROJECTION | DO NOT SCALE |
|------------------------|-----------|------------------------|--------------|
| FROM 0 TO 20 | > 20 | USE MATH DATA | |
| 20 TO 30 | > 30 | | |
| 30 TO 40 | > 40 | | |
| 40 TO 50 | > 50 | | |
| 50 TO 60 | > 60 | | |
| 60 TO 70 | > 70 | | |
| 70 TO 80 | > 80 | | |
| 80 TO 90 | > 90 | | |
| 90 TO 100 | > 100 | | |
| 100 TO 150 | > 150 | | |
| 150 TO 200 | > 200 | | |
| 200 TO 250 | > 250 | | |
| 250 TO 300 | > 300 | | |
| 300 TO 400 | > 400 | | |

DELPHI
 DELPHI PACKARD ELECTRICAL/ELECTRONIC ARCHITECTURE

WARREN, OH
 COPYRIGHT 1989 DELPHI CORPORATION AND/OR ITS AFFILIATES. ALL RIGHTS RESERVED.
 THIS DRAWING IS THE PROPERTY OF DELPHI CORPORATION. THE REPRODUCTION, DISTRIBUTION AND UTILIZATION OF THIS DOCUMENT OR ITS RELATED CAD WITH DATA AS WELL AS COMMUNICATION OF ANY CONTENT TO OTHERS, WITHOUT EXPRESS AUTHORIZATION IS PROHIBITED.

DATE: 20 JUL 89
 J.E. HOUGELMAN
 J.E. HOUGELMAN
 S.M. KEISEL V.

THIS DOCUMENT IS IN ACCORDANCE WITH ASME Y14.5M-1994 AS MODIFIED BY THE 1995 SUPPLEMENT AND TELEPHONING ADDENDUM-2001. SEPARATE PATTERNS OF FEATURES MAY BE SHOWN SEPARATELY, IRRESPECTIVE OF DATA REFERENCES.

ALL DIMENSIONS ARE IN MILLIMETERS

UNLESS OTHERWISE SPECIFIED

REFERENCE: TAXI ASM CONN I F M/P 280 SLD

DRAWING NUMBER: 12089917

SIZE: A0 SCALE: 2:1 FRAME NO: 1 OF 1 SHEET NO: 1 OF 1 STG: R N/P: 04