



Part Number : [190040009](#)

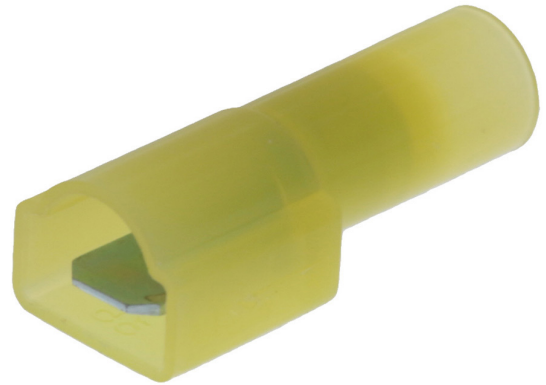
Product Description : InsulKrimp Fully Insulated Coupler, Male, for 10-12 AWG Wire, Box

Series Number : 19004

Status : Active

Product Category : Quick Disconnects

Engineering Number : C-2264



Documents & Resources

Drawings

[Drawing 190040009_sd.pdf](#)

3D Models and Design Files

[3D Model 190040009_stp.zip](#)

Specifications


[Product Specification PS-19902-008-001.pdf](#)

[Product Specification PS-19902-011-001.pdf](#)

[Product Specification PS-19902-013-001.pdf](#)

Product Environment Compliance

Compliance

GADSL/IMDS	Compliant with Exemption 44
China RoHS	
EU ELV	Not Relevant
Low-Halogen Status	Low-Halogen per IEC 61249-2-21
REACH SVHC	Not Contained per D(2023)3788-DC (14 Jun 2023)
EU RoHS	Compliant per EU 2015/863

Multiple Part Product Compliance Statements

- Eu RoHS

- REACH SVHC

- Low-Halogen

Multiple Part Industry Compliance Documents

- IPC 1752A Class C
- IPC 1752A Class D
- Molex Product Compliance Declaration
- IEC-62474
- chemSHERPA (xml)

EU RoHS Certificate of Compliance

Part Details

General

Status	Active
Category	Quick Disconnects
Series	19004
Description	InsulKrimp Fully Insulated Coupler, Male, for 10-12 AWG Wire, Box
Product Family	Standard Quick-Disconnect Terminals
Product Name	InsulKrimp
Type	Quick Disconnect
UPC	800753030138

Agency

CSA	LR18689
UL	E79133

Electrical

Voltage - Maximum	600V
-------------------	------

Physical

Barrel Type	Closed
Color - Resin	Yellow
Flammability	94V-2
Gender	Male
Glow-Wire Capable	No
Insulated	Fully

Insulation	Nylon (PA)
Lock to Mating Part	None
Material - Metal	Brass
Material - Plating Mating	Zinc Chromate
Material - Plating Termination	Zinc Chromate
Material - Resin	Nylon
Net Weight	1.978/g
Orientation	Straight
Packaging Type	Bag
Polarized to Mating Part	No
Tab Thickness	0.81mm
Tab Width	6.35mm
Temperature Range - Operating	-65° to +105°C
Wire Insulation Diameter	6.99mm max.
Wire Size (AWG)	10, 12

Solder Process Data

Lead-Free Process Capability	N/A
------------------------------	-----

Use with Part(s)

Description	Part Number
InsulKrimp Fully Insulated Coupler, Female, for 10-12 AWG Wire, Box	/content/molex/molex-dot-com/us/en/products/product-page.html/190050010.html
InsulKrimp Fully Insulated Coupler, Female, for 10-12 AWG Wire, Continuous Molded Strip	/content/molex/molex-dot-com/us/en/products/product-page.html/190050014.html
InsulKrimp Fully Insulated Coupler, Female, for 10-12 AWG Wire, Mylar Tape	/content/molex/molex-dot-com/us/en/products/product-page.html/190050015.html

Application Tooling

Global

Description	Part Number
Hand Crimp Tool	0640015100

Crimp Head for the AT-200 Pneumatic Hand Tool	<u>0640055100</u>
--	-------------------

This document was generated on Sep 28, 2023